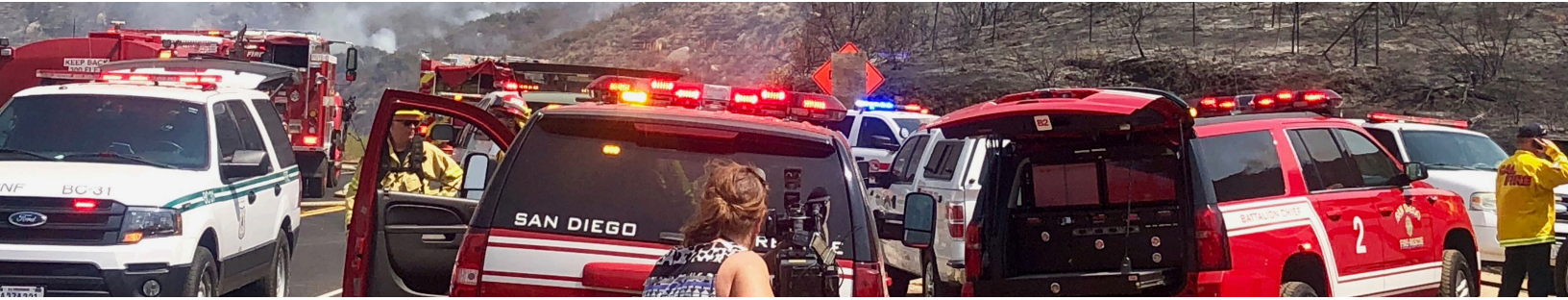


# LARGE ANIMAL EMERGENCY PREPAREDNESS CHECKLIST

With Southern California prone to earthquakes, wildfires and other disasters, it's important for animal owners to have an emergency plan in place. Here are some tips on how to prepare and what to do if you need to evacuate with your animals.



## □ UPDATE IDENTIFICATION

Make sure all animals have ID. Microchipping can help if they were to become lost. It's a good idea to include your cell phone number and the phone number of a friend or relative outside your immediate area in case your animal is lost and you aren't at home.

## □ PRACTICE TRANSPORT

Work with your animals to be sure they are used to being loaded and unloaded from their trailers or travel containers. They should also be comfortable with a halter, collar, leash or what would be appropriate to wear. Also if you own multiple animals, be sure you are able to transport all of them at the same time. Mark transport with names and descriptions of animals along with your contact information.

## □ MAP EVACUATION ROUTES

Plan for a primary and secondary route depending on access during an emergency, and drive them in advance.

## □ RESEARCH WHERE TO GO

Make arrangements with boarding facilities or a friend with a ranch in a different area to take in your large animals in the event of a disaster. Shelters may designate a safe area to bring large animals (however, this should be a last resort as these facilities are likely to be stretched to their limits during a disaster). Arrange for food, water, veterinary care and other support where you can bring your animals.

## IN THE EVENT OF AN EMERGENCY

- ✓ **Bring Animals Indoors:** If you have a barn or shelter, this will help reduce stress and keep your animals safe.
- ✓ **In Case You're Away:** Make arrangements in advance with a trusted neighbor or friend who is comfortable with your animals to bring them under shelter or transport them if necessary.
- ✓ **Leave Early and Take Your Animals:** One of the most important things to do if you are evacuating your home is to take your animals with you, because you may be forced to stay away longer than anticipated. In addition, leave early and don't wait for mandatory evacuation orders — if emergency officials have to evacuate you, you might be told to leave your animals behind. Also, your animals will be less stressed if they are with you when evacuated versus a rescuer later.



Call **619-299-7012** for all animal-related emergencies from 7:30 a.m. to 6 p.m. or after hours, contact your local law enforcement agency.

# PREPARE AN ANIMAL EMERGENCY KIT

Put the following supplies in a waterproof container and keep with your transport:

- ❑ **Seven-plus days' supply of food and water as well as feeding containers.**
- ❑ **Medications and medical records.**
- ❑ **Harness, halters, collar and the like with tags and leashes.**
- ❑ **Blankets or bedding.**
- ❑ **Sanitation resources to clean up after your animal.**
- ❑ **Photos and descriptions of each animal (printed in case your phone doesn't work) as well as paperwork proving ownership.**
- ❑ **First aid kit.**
- ❑ **Stickers you can attach to your animal's tags with the information of your intended destination and temporary contact information.**



## ONLINE RESOURCES

- @sdhumane on Twitter
  - sdcountyemergency.com
  - ReadySanDiego.org
  - SDEmergency app
  - @SanDiegoCounty on Twitter
- En español:*
- ListoSanDiego.org
  - SDEmergency app
  - @ListoSanDiego on Twitter

**REMEMBER:** In case of a flood, fire, earthquake, hazardous spill or other disaster, your animals will rely on you to help them escape. **The more prepared you are, the safer you and your animals will be!**



Call **619-299-7012** for all animal-related emergencies from 7:30 a.m. to 6 p.m. or after hours, contact your local law enforcement agency.